



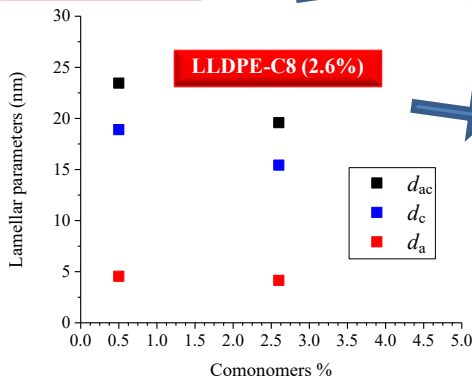
First year activity

PE film properties are affected by

- Chain microstructure
- Cooling conditions

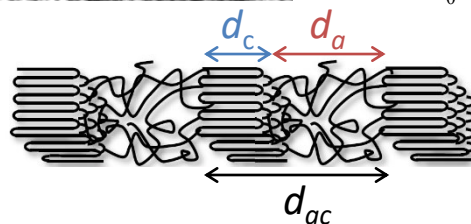
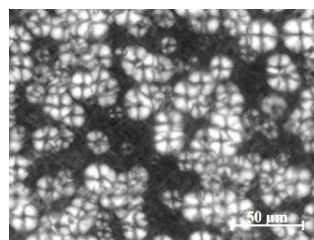
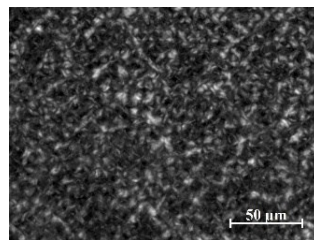
Differences could be explained in terms of crystalline microstructure and morphology.

HDPE-C4 (0.5%)

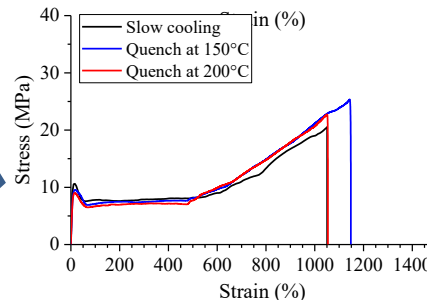
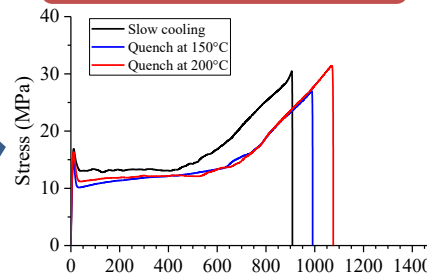


Long spacing, crystal and amorphous thickness from SAXS analysis

POM images



Stress and strain curves



Young's modulus for blend of HDPE-C4 (0.5%) and LLDPE-C8 (2.6%)

PER-MANENT

A microstructural insight in PolyEthylene based bioRiented mono-Materials: from fuNdamENtAl to processing

Ph.D. Student:
Adriano Guida

Also a proper blending allows to modulate properties

